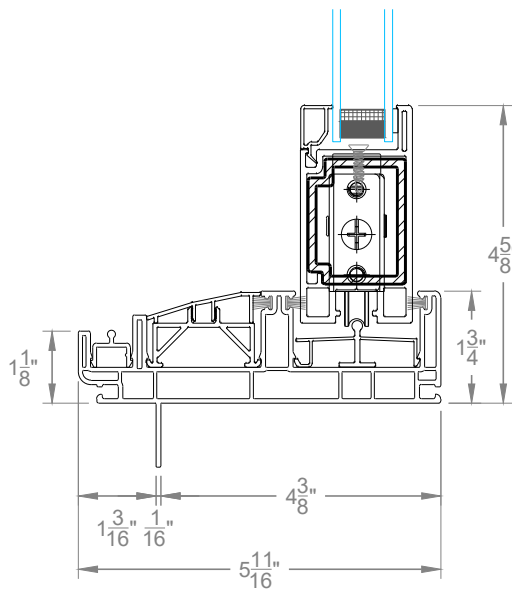


Details are intended to show a typical water proofing method for patio doors to be completed prior to door installation. Water proofing envelope details are to be completed By Others and ARE NOT the responsibility of Westeck Windows & Doors.

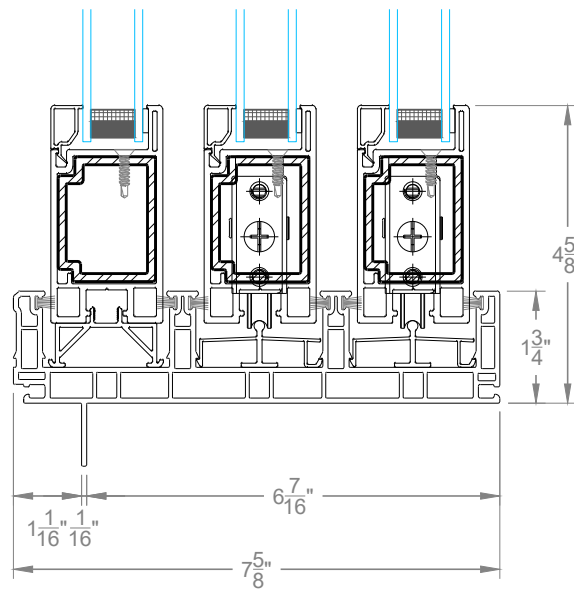
See project specific architectural and envelope engineering details that pertain to waterproofing sequencing details. It is the sole responsibility of the contractor and product installer to ensure all products are installed level, plumb and square to allow for proper operation and full product warranty.

Westeck Windows & Doors neither endorses nor approves of any water proofing methods that do not meet the minimum Building Code requirements within any given jurisdiction, and reserves the right to refuse to complete the patio door installation until code minimum requirement have proven to have been met.

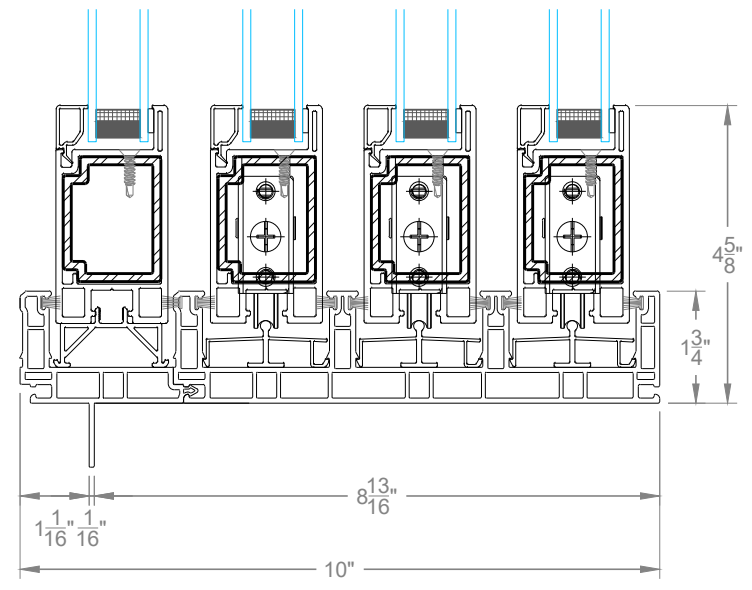
Builder: Please review the attached information for prepping your door openings before install crew arrives. Non-completed openings will cause delays and extra costs.



425 Slide - 2 Track Door Sill



GrandView MultiSlide - 3 Track Door Sill



GrandView MultiSlide - 4 Track Door Sill



REV.	DATE	DESCRIPTION
1	-	-
2	-	-
3	-	-
4	-	-
5	-	-

CUSTOMER APPROVAL (SIGNATURE)
425 Slide & GrandView Multi-Slide Door
Rough Opening Preparation

SCALE	1:3
DATE	2018-01-24
SALES REP	-
DRAWN BY	-

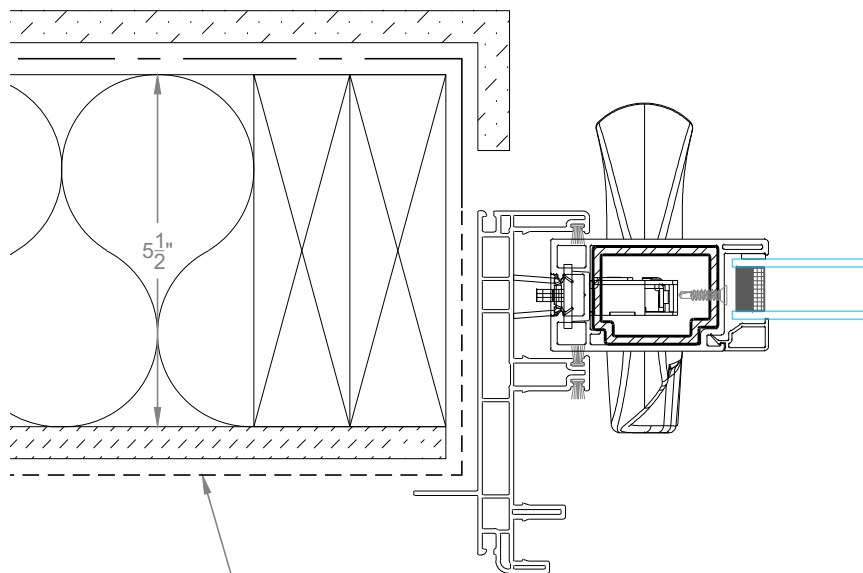
ORDER NUMBER	-
DRAWING NUMBER	Sill Comparison

Details are intended to show a typical water proofing method for patio doors to be completed prior to door installation. Water proofing envelope details are to be completed By Others and ARE NOT the responsibility of Westeck Windows & Doors.

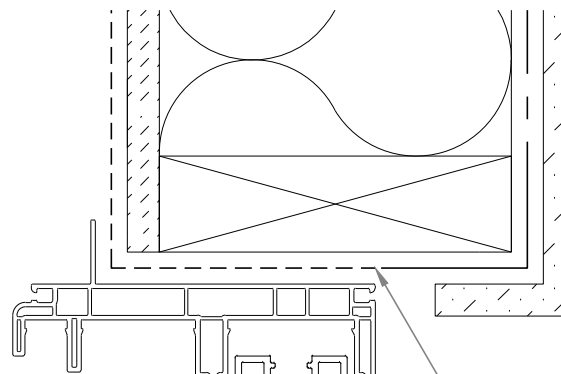
See project specific architectural and envelope engineering details that pertain to waterproofing sequencing details. It is the sole responsibility of the contractor and product installer to ensure all products are installed level, plumb and square to allow for proper operation and full product warranty.

Westeck Windows & Doors neither endorses nor approves of any water proofing methods that do not meet the minimum Building Code requirements within any given jurisdiction, and reserves the right to refuse to complete the patio door installation until code minimum requirement have proven to have been met.

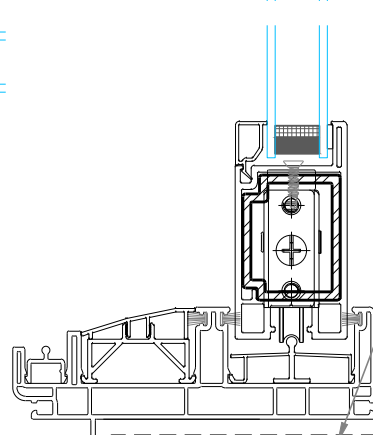
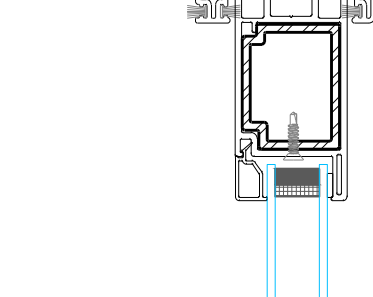
Builder: Please review the attached information for prepping your door openings before install crew arrives. Non-completed openings will cause delays and extra costs.



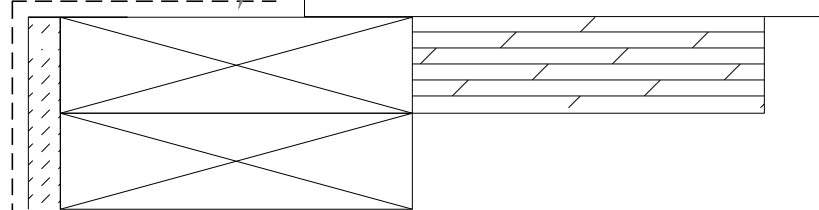
BUILDING PAPER TO WRAP INTO ROUGH OPENINGS TO MIN. FULL DEPTH OF PATIO DOOR AND LAP OVER WATER PROOFING SILL MEMBRANE TAPE ALL CORNER CUTS (BY OTHERS)
SEE SILL SECTION DRAWING FOR DIMENSION



BUILDING PAPER TO WRAP INTO ROUGH OPENINGS TO MIN. FULL DEPTH OF PATIO DOOR. TAPE ALL CORNER CUTS. (BY OTHERS)
SEE SILL SECTION DRAWING FOR DIMENSION



WATER PROOFING MEMBRANE TO CONTINUE INTO ROUGH OPENING TO MIN. FULL DEPTH OF PATIO DOOR. WRAP MEMBRANE 8" UP JAMBS. SEAL ALL SEAMS OF MEMBRANE.
SEE SILL SECTION DRAWING FOR DIMENSION



REV.	DATE	DESCRIPTION
1	-	-
2	-	-
3	-	-
4	-	-
5	-	-

CUSTOMER APPROVAL (SIGNATURE)
425 Slide Patio Door
Rough Opening Preparation

SCALE	1:3
DATE	2018-01-24
SALES REP	-
DRAWN BY	-

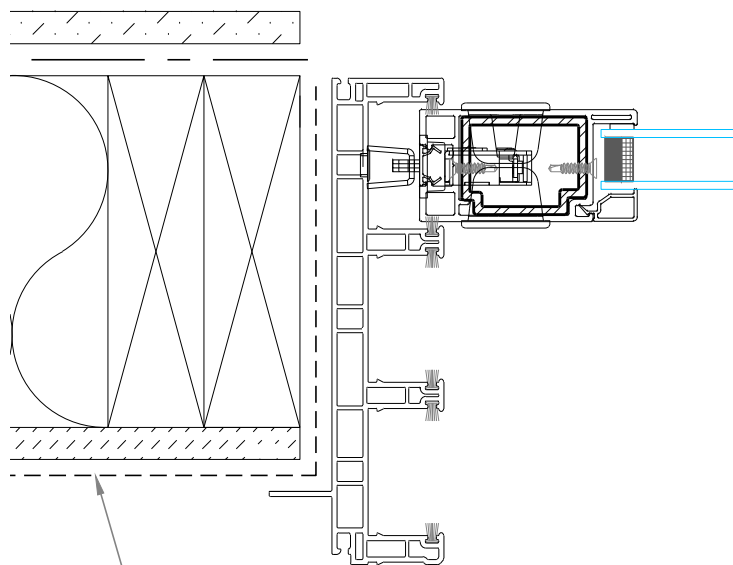
ORDER NUMBER	-
DRAWING NUMBER	-

Details are intended to show a typical water proofing method for patio doors to be completed prior to door installation. Water proofing envelope details are to be completed By Others and ARE NOT the responsibility of Westeck Windows & Doors.

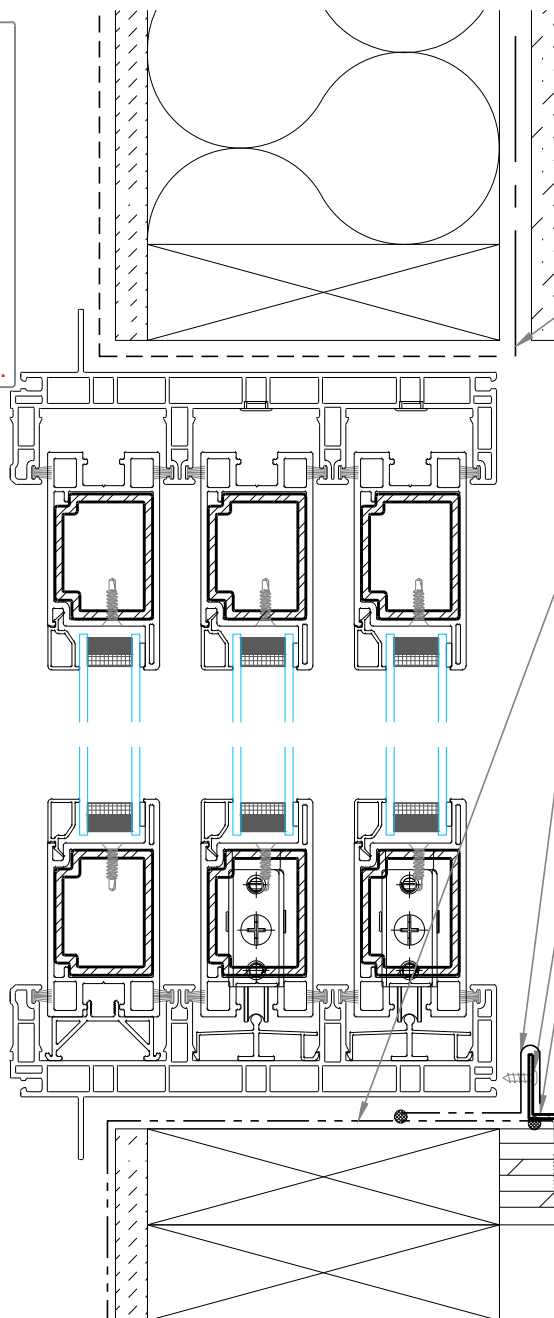
See project specific architectural and envelope engineering details that pertain to waterproofing sequencing details. It is the sole responsibility of the contractor and product installer to ensure all products are installed level, plumb and square to allow for proper operation and full product warranty.

Westeck Windows & Doors neither endorses nor approves of any water proofing methods that do not meet the minimum Building Code requirements within any given jurisdiction, and reserves the right to refuse to complete the patio door installation until code minimum requirement have proven to have been met.

Builder: Please review the attached information for prepping your door openings before install crew arrives. Non-completed openings will cause delays and extra costs.



BUILDING PAPER TO WRAP INTO ROUGH OPENINGS TO MIN. FULL DEPTH OF PATIO DOOR AND LAP OVER WATER PROOFING SILL MEMBRANE TAPE ALL CORNER CUTS (BY OTHERS)
SEE SILL SECTION DRAWING FOR DIMENSION



BUILDING PAPER TO WRAP INTO ROUGH OPENINGS TO MIN. FULL DEPTH OF PATIO DOOR. TAPE ALL CORNER CUTS (BY OTHERS)
SEE SILL SECTION DRAWING FOR DIMENSION

WATER PROOFING MEMBRANE TO CONTINUE INTO ROUGH OPENING AND UNDER INSTALL ANGLE (BY OTHERS).

WRAP SECONDARY MEMBRANE UP AND OVER THE ALUMINUM INSTALLATION ANGLE REQUIRED TO FASTEN SILL OF PATIO DOOR. WRAP MEMBRANE 8" UP JAMBS. SEAL ALL SEAMS OF MEMBRANE (BY WESTECK).
SEE SILL SECTION DRAWING FOR DIMENSION

#10 X 1/4" OR 3/4" FASTENERS @ 6" O.C. (BY OTHERS)

1"x 1"x 0.063" ALUM. INSTALLATION ANGLE (SUPPLIED BY WESTECK)
SEALED TO PRIMARY MEMBRANE (BY WESTECK)

ANCHORING FASTENERS MAY VARY DUE TO BLDG CONSTRUCTION TYPE @ 6" O.C. (BY OTHERS)



REV.	DATE	DESCRIPTION
1	-	-
2	-	-
3	-	-
4	-	-
5	-	-

CUSTOMER APPROVAL (SIGNATURE)
GrandView 3-Panel Multi Slide Patio Door
Rough Opening Preparation

SCALE	1:3
DATE	2018-01-24
SALES REP	-
DRAWN BY	-

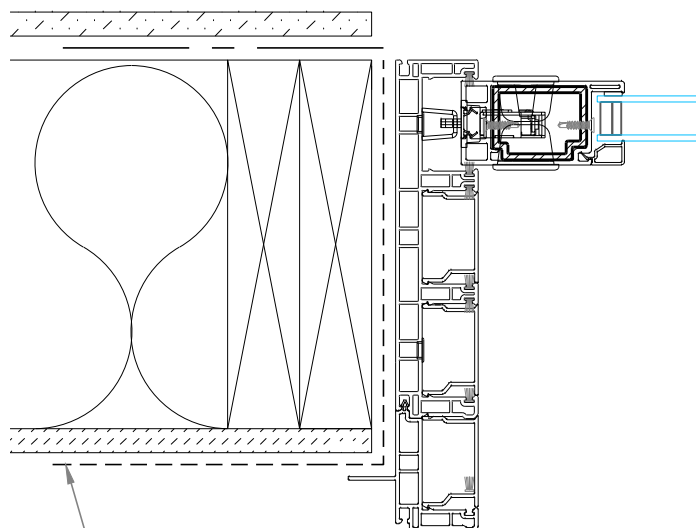
ORDER NUMBER	-
DRAWING NUMBER	-

Details are intended to show a typical water proofing method for patio doors to be completed prior to door installation. Water proofing envelope details are to be completed By Others and ARE NOT the responsibility of Westeck Windows & Doors.

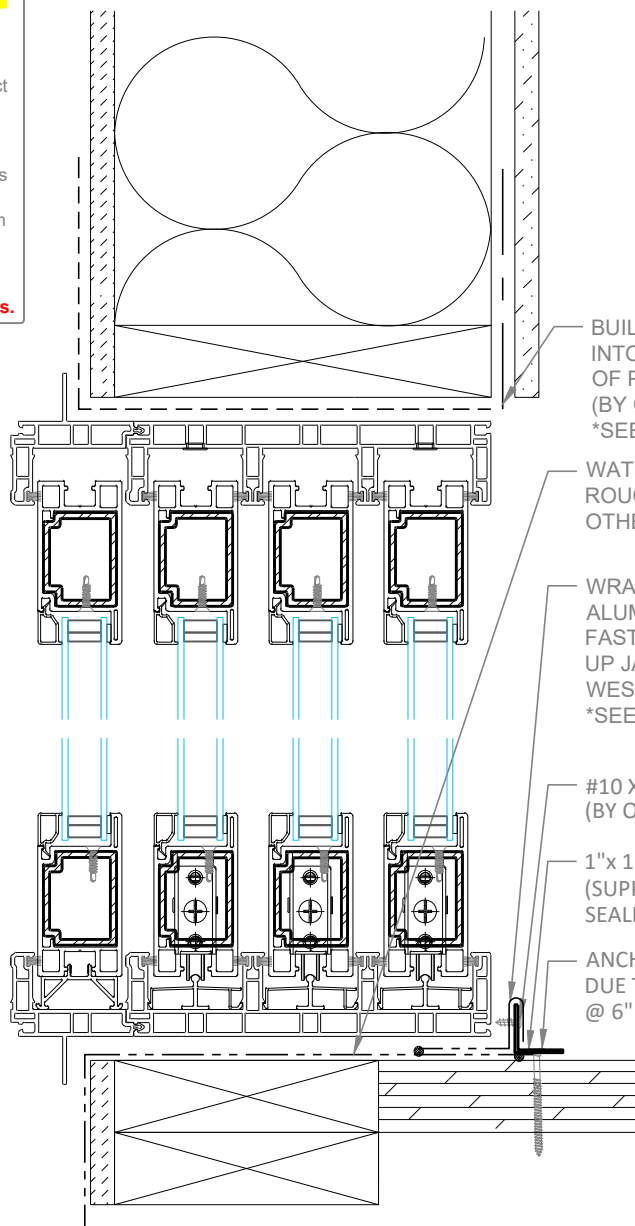
See project specific architectural and envelope engineering details that pertain to waterproofing sequencing details. It is the sole responsibility of the contractor and product installer to ensure all products are installed level, plumb and square to allow for proper operation and full product warranty.

Westeck Windows & Doors neither endorses nor approves of any water proofing methods that do not meet the minimum Building Code requirements within any given jurisdiction, and reserves the right to refuse to complete the patio door installation until code minimum requirement have proven to have been met.

Builder: Please review the attached information for prepping your door openings before install crew arrives. Non-completed openings will cause delays and extra costs.



BUILDING PAPER TO WRAP INTO ROUGH OPENINGS TO MIN. FULL DEPTH OF PATIO DOOR AND LAP OVER WATER PROOFING SILL MEMBRANE TAPE ALL CORNER CUTS (BY OTHERS)
SEE SILL SECTION DRAWING FOR DIMENSION



BUILDING PAPER TO WRAP INTO ROUGH OPENINGS TO MIN. FULL DEPTH OF PATIO DOOR. TAPE ALL CORNER CUTS (BY OTHERS)
SEE SILL SECTION DRAWING FOR DIMENSION

WATER PROOFING MEMBRANE TO CONTINUE INTO ROUGH OPENING AND UNDER INSTALL ANGLE (BY OTHERS).

WRAP SECONDARY MEMBRANE UP AND OVER THE ALUMINUM INSTALLATION ANGLE REQUIRED TO FASTEN SILL OF PATIO DOOR. WRAP MEMBRANE 8" UP JAMBS. SEAL ALL SEAMS OF MEMBRANE (BY WESTECK).
SEE SILL SECTION DRAWING FOR DIMENSION

#10 X 1/4" OR 3/4" FASTENERS @ 6" O.C. (BY OTHERS)

1"x 1"x 0.063" ALUM. INSTALLATION ANGLE (SUPPLIED BY WESTECK)
SEALED TO PRIMARY MEMBRANE (BY WESTECK)

ANCHORING FASTENERS MAY VARY DUE TO BLDG CONSTRUCTION TYPE @ 6" O.C. (BY OTHERS)



REV.	DATE	DESCRIPTION
1	-	-
2	-	-
3	-	-
4	-	-
5	-	-
6	-	-

CUSTOMER APPROVAL (SIGNATURE)
GrandView 4-Panel Multi Slide Patio Door
Rough Opening Preparation

SCALE	1:4
DATE	2018-01-24
SALES REP	-
DRAWN BY	-

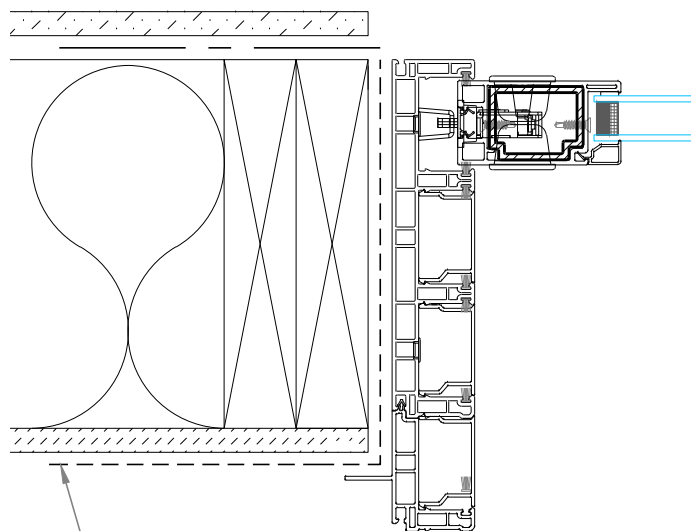
ORDER NUMBER	-
DRAWING NUMBER	-

Details are intended to show a typical water proofing method for patio doors to be completed prior to door installation. Water proofing envelope details are to be completed By Others and ARE NOT the responsibility of Westeck Windows & Doors.

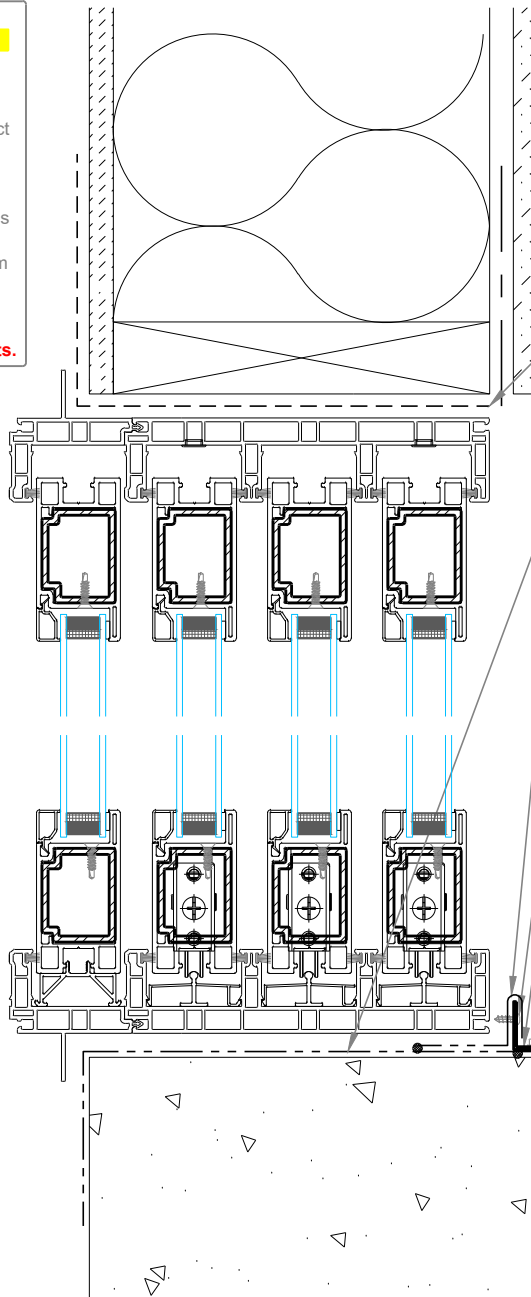
See project specific architectural and envelope engineering details that pertain to waterproofing sequencing details. It is the sole responsibility of the contractor and product installer to ensure all products are installed level, plumb and square to allow for proper operation and full product warranty.

Westeck Windows & Doors neither endorses nor approves of any water proofing methods that do not meet the minimum Building Code requirements within any given jurisdiction, and reserves the right to refuse to complete the patio door installation until code minimum requirement have proven to have been met.

Builder: Please review the attached information for prepping your door openings before install crew arrives. Non-completed openings will cause delays and extra costs.



BUILDING PAPER TO WRAP INTO ROUGH OPENINGS TO MIN. FULL DEPTH OF PATIO DOOR AND LAP OVER WATER PROOFING SILL MEMBRANE TAPE ALL CORNER CUTS (BY OTHERS)
SEE SILL SECTION DRAWING FOR DIMENSION



BUILDING PAPER TO WRAP INTO ROUGH OPENINGS TO MIN. FULL DEPTH OF PATIO DOOR. TAPE ALL CORNER CUTS (BY OTHERS)
SEE SILL SECTION DRAWING FOR DIMENSION

WATER PROOFING MEMBRANE TO CONTINUE INTO ROUGH OPENING AND UNDER INSTALL ANGLE (BY OTHERS).

WRAP SECONDARY MEMBRANE UP AND OVER THE ALUMINUM INSTALLATION ANGLE REQUIRED TO FASTEN SILL OF PATIO DOOR. WRAP MEMBRANE 8" UP JAMBS. SEAL ALL SEAMS OF MEMBRANE (BY WESTECK).
SEE SILL SECTION DRAWING FOR DIMENSION

#10 X 1/4" OR 3/4" FASTENERS @ 6" O.C. (BY OTHERS)

1"x 1"x 0.063" ALUM. INSTALLATION ANGLE (SUPPLIED BY WESTECK)
SEALED TO PRIMARY MEMBRANE (BY WESTECK)

CONCRETE ANCHORS MAY VARY DUE TO BLDG CONSTRUCTION TYPE @ 6" O.C. (BY OTHERS)



REV.	DATE	DESCRIPTION
1	-	-
2	-	-
3	-	-
4	-	-
5	-	-

CUSTOMER APPROVAL (SIGNATURE)
GrandView 4-Panel Multi Slide Concrete Sill Patio Door
Rough Opening Preparation

SCALE	1:4
DATE	2018-01-24
SALES REP	-
DRAWN BY	-

ORDER NUMBER	-
DRAWING NUMBER	-